

9x6.5cm Embossed Candle Holder Glass Container with Lid "dot"



This plain candle glass with a lid is a good option for brand's promotion, it is a new trending design on the market.

The glass capacity is about 7oz fill in wax, overflow capacity is about 8.8oz.

It has multiple uses such as candle holder, candy jar, makeup storage jar, jewelry jar, key storage jar etc.



Our Strength

10000 square meters decorating workshop.

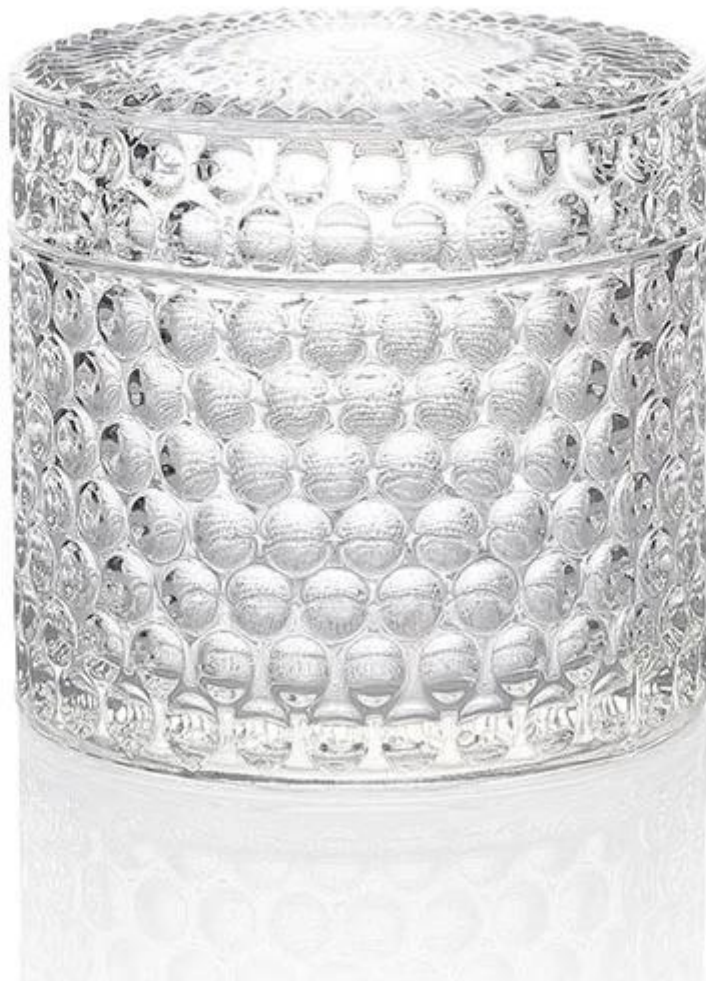
20 kinds of different decorating machines.

20 years experience in the decorating area.

20+ stable glass factories supporting.

Worldwide famous brands making such as Armani Zara etc.

Cupwind is the reliable [plain candle glass supplier china](#).



Cupwind is offering glass candle holder OEM and ODM for years.

We have helped with many cusotmers to expand their product-lines with positive feedbacks.

We have our own decorating workshop to gurantee the quality great.

Cupwind is a quality and service oriented supplier of [plain candle glass](#).





TEST APPROVAL

Each order is tested by third parties with annealing and thermal shock test, lead and cadmium test before shipping out,

which assured our customers for years, here above is one of a test report for [iridescent candle holder glass](#).

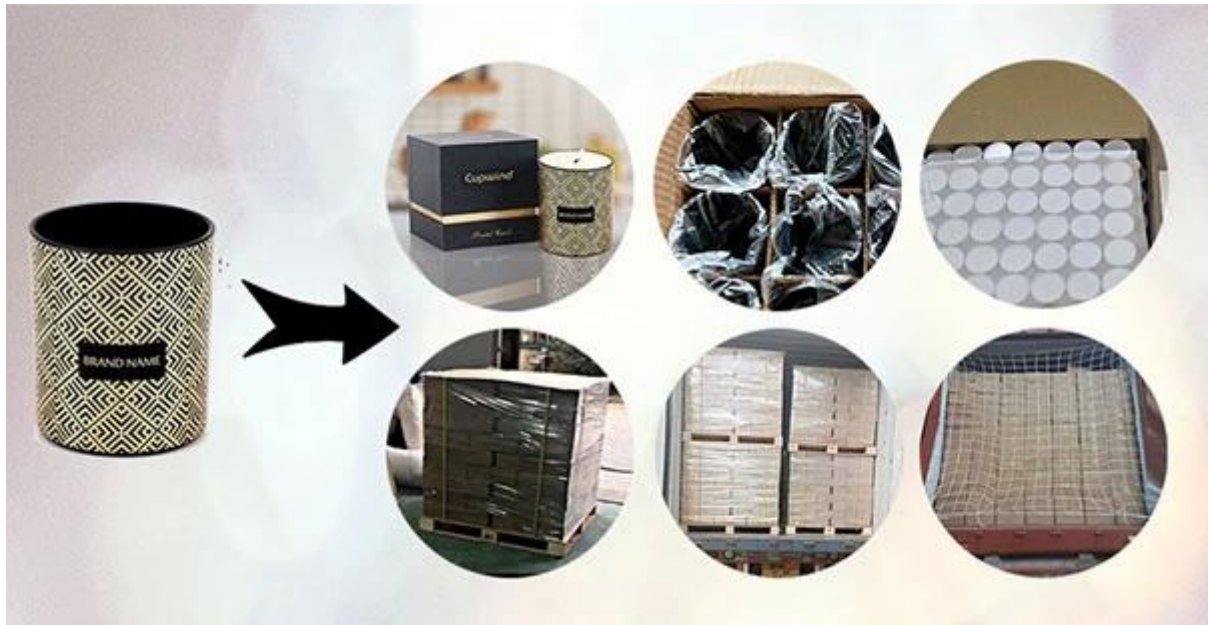
TEST REPORT		8821097-0435 Page 3 of 4	
SHENZHEN JIERUMA TRADING CO., LTD. NO.415 RUNLIAN BUILDING, SHENZHU ROAD, HENGQIANG, 518115, SHENZHEN, CHINA		LAB LOCATION: SHENZHEN LAB NUMBER: 8821097-0435	
ATTN: EMMA ZOU CC: emma@cupwind.com		DATE IN: APR 07, 2021 MOD. LOG IN: / DATE OUT: APR 13, 2021 REVISED DATE: / WORKING DAYS: 5 PAGE: 2 OF 4	
OVERALL RATING			
PASS		X	
FAIL			
DATA			
TESTING FOR CA 85 LEAD & CADMIUM ON NON-FOOD / BEVERAGE GLASSWARE-EXTERIOR			
Sample Description: IRIDESCENT COATING CANDLE JAR			
Manufacturer: CUPWIND COOPERATED FACILITY		P.O. No.: /	
Buyer: SPOT		Style: /	
Country of Origin: CHINA		Country of Destination: USA	
Color: IRIDESCENT		SKU Number: ITEM# 3050	
Brand name: CUPWIND IS			
Re-test: Yes: No: X		Change Vendor: Yes: X No: /	
Previous Report No: /			
EXECUTIVE SUMMARY:			
Test content CA 85 Lead & Cadmium on non-food/beverage glassware-exterior		Result Rating Must Pass	
Examination of annealing	ASTM F2175-20 Sec. 4.2 (Mod)	With a tungsten-carbide scriber, scratch twice around the inside knuckle of the article. Then scratch an "X" across the entire inside bottom surface of the article. All scratches are to be made using sufficient pressure to just penetrate the surface of the glass. Fill each article with water at the same room temperature as the glass. Wait 15 minutes, then empty the water and examine each piece for fractures. Shall show no fractures. Report the number of fractures, if any, for each test.	SI PASS
Thermal shock	ASTM F2175-20 Sec. 4.2 (Mod) / ASTM C149	Modification: expanded scope to all other glass products in addition to candle containers. Shall not crack or break after being per below: - prepare a cold water bath at 21 ± 1.1°C (70 ± 2°F); - prepare a hot bath at 71 ± 1.1°C (160 ± 2°F); - immerse the sample completely in the hot water bath and allow to soak for 1 min ± 15 s; - transfer the sample to the cold bath, and immerse for at least 30 s; - remove the sample from the cold bath and examine the sample for any cracking. Note: - the hot water that collects within the container during the first immersion shall be retained in the container through the second immersion. - the time of transfer from the hot bath to the cold bath shall be 15 ± 1 s. Modification: sampling procedure not followed and expanded scope to all other glass products in addition to candle containers.	SI PASS
REMARK: 1. No enclosed protocol for test results in this report.			

Packaging of Candle Holders

Cupwind takes care of each piece of candle holders with heart.

Each candle holder is wrapped by opp plastic bag, 24pcs/48pcs/72pcs/144pcs inserted into a carton box with egg dividers.

loading with wooden pallet which is safer and more efficient, in the end, we will have a cotton net at the door opening place to stop it from falling.



Accessories that related to Candle Holders

With requests of our customers, Cupwind also offers accessories such as gift box for scented candles, wick tool set like wick trimmer, cutter, snuffer, lids in wood and metal like stainless steel and zinc alloy.



Wick Trimmer Cutter



Zinc Alloy Lid



Wooden Lid



Neck



Stopper



Reed

Gift Box.



Gift Box